



Land Surveying 3D Laser Scanner

HMH offers an experienced staff with the right equipment and solutions to perform detailed and accurate real-scene computer modeling of any complex environment or space.

Utilizing a laser scanner, all the necessary detail is captured with the added benefit of remote-sensing, allowing safe and effective data acquisition in otherwise inaccessible areas. Sub-centimeter-accurate global positioning of any scene is obtained using wireless network Real-Time Kinematic (RTK) surveying. Combined with our fully robotic total stations, we provide complete survey solutions for any application.

The 3D laser Scanner acquires hundreds of precise 3D points per second, generating a point cloud of data. Post-processing of this data produces interactive, three-dimensional, design-level computer reproductions of the scanned space.

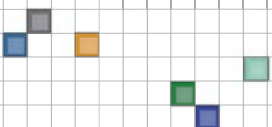
Effective uses include:

- Digital terrain model production used for design, analysis, and volume computations
- 3D model generation with color, surface, and body data
- Development scene analysis with accurate sight line simulations
- Computer modeling of existing buildings and other complex structures
- Design interface and conflict resolution



The images above show the point cloud data acquired by the laser scanner. With post-processing, this data is converted to 3D computer models and maps, ready for design and analysis.

1570 Oakland Road
San Jose, CA 95131
(408) 487-2200
www.HMHca.com





Land Surveying Condominium Plans and Mapping

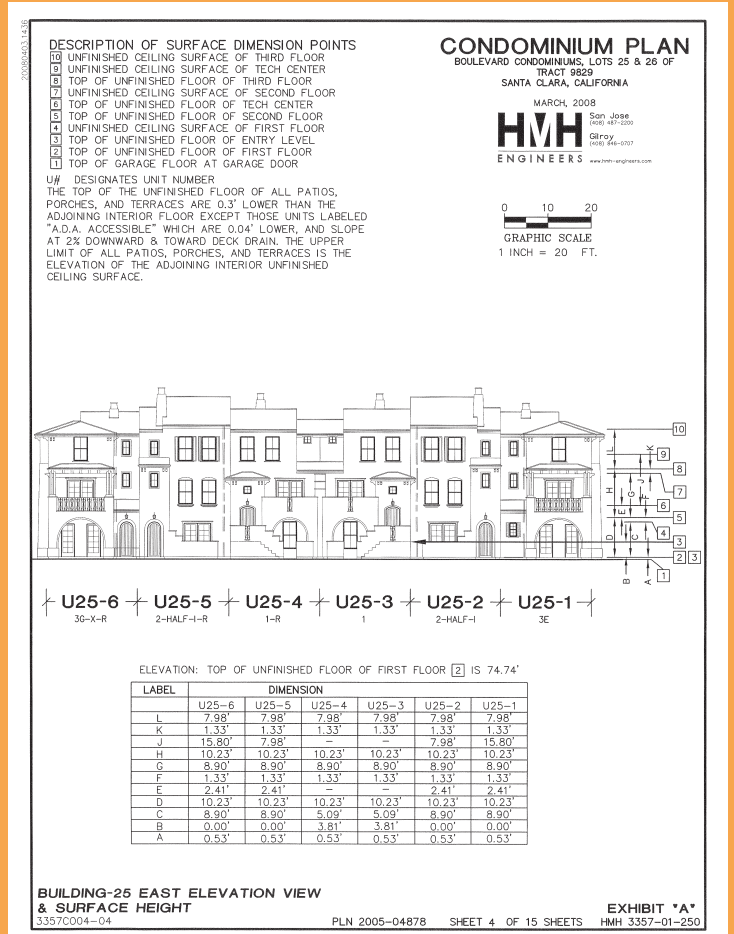
HMH specializes in condominium mapping services for new construction condominiums and condominium conversion of existing buildings. From project inception, we closely coordinate the requirements and facilitate solutions to successfully navigate through the condominium creation process. Working with the attorney, title company, architect, and builder, we provide the directional insight to avoid pitfalls and steer clearly toward economically viable solutions that save time and money.

The condominium plans prepared by HMH shows a clear graphical representation that delineates the limit of airspace and common ownership, tied to horizontal and vertical control.

The condominium creation process is enhanced with the integration of HMH's decades of local experience creating commercial, industrial, residential and mixed use condominiums throughout the Bay Area.

HMH provides the condominium plans and the experience required to meet the needs of any project.

- Complete mapping services
- Compliance with local and state agency requirements
- Coordination with builder, attorney, title company and architect



1570 Oakland Road
San Jose, CA 95131
(408) 487-2200
www.HMHca.com



Land Surveying

Topographic Mapping Surveys

Project site planning and site design begins with the use of a topographic base map. Accurate mapping is essential to successful implementation of any design. HMH employs the most productive and cost efficient methodologies when preparing project topographic mapping for all of our projects. Whether our field personnel utilize conventional survey instruments and techniques or the latest in survey technology, we obtain reliable data that translates directly to efficient map production in the office.

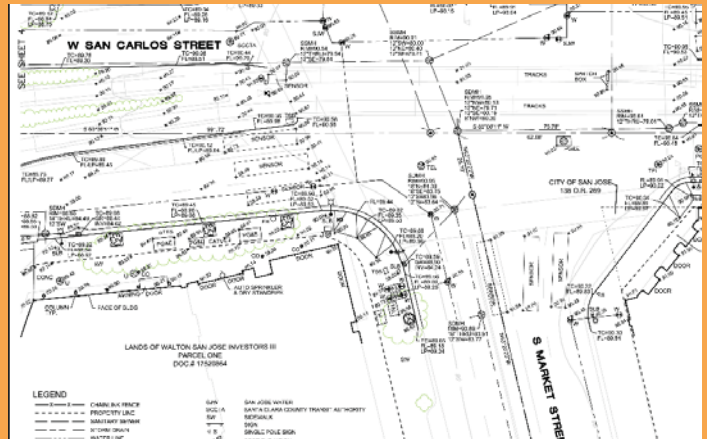
HMH's experienced and professional survey staff provides our client's with the most cost efficient and expeditious method available to obtain appropriate topographic mapping for any project.

Our extensive experience and inventory of survey equipment provides us with the ability to select the best tool and technique for each mapping application encountered:

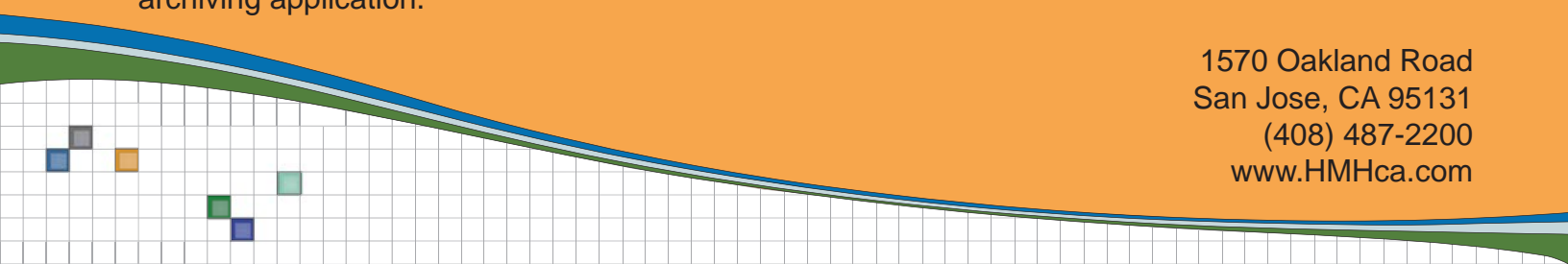
Survey Applications and solutions:

- Large, open land areas..... Aerophotogrammetric Subconsultant
- Obscured ground surfaces..... Fully Robotic Total Station
- Freeways and railroads..... 3D Laser Scanner
- Busy Intersections and roadways..... 3D Laser Scanner
- Urban Infill land area..... Fully Robotic Total Station
- Mechanical and piping systems..... 3D Laser Scanner
- Hazardous materials..... Real- Time Kinematic-Global Positioning System (RTK-GPS)

We process the data acquired from any survey method to produce accurate hard-copy maps, CAD base drawings, and three-dimensional computer models suited for any design, analysis, or archiving application.



1570 Oakland Road
 San Jose, CA 95131
 (408) 487-2200
 www.HMHca.com





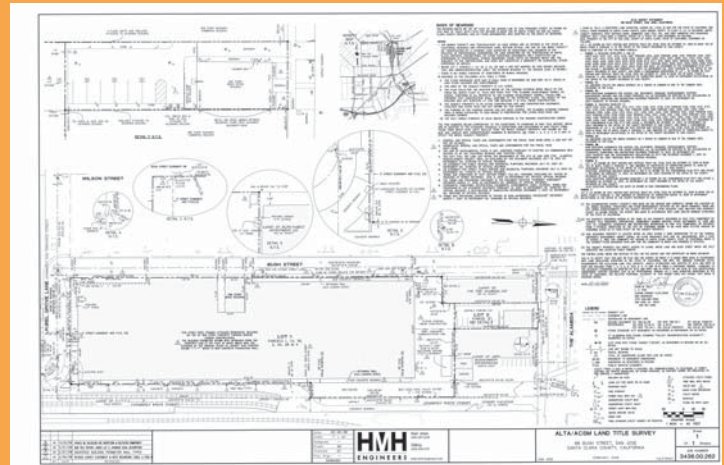
Land Surveying ALTA / ACSM Land Title Surveys

HMH has assisted title companies and land buyers/sellers by providing boundary and ALTA surveys for industrial, commercial and rental land use transactions for over 30 years.

We maintain up-to-date knowledge of the stringent requirements developed by the American Land Title Association and the American Congress on Surveying and Mapping.

Using our expertise and knowledge, we coordinate project-specific requirements to ensure complete and accurate surveys for our projects.

Quality and efficiency is enhanced in our process through the integration of our office and field operations, both utilizing the latest in software and field equipment technology.



1570 Oakland Road
San Jose, CA 95131
(408) 487-2200
www.HMHca.com

